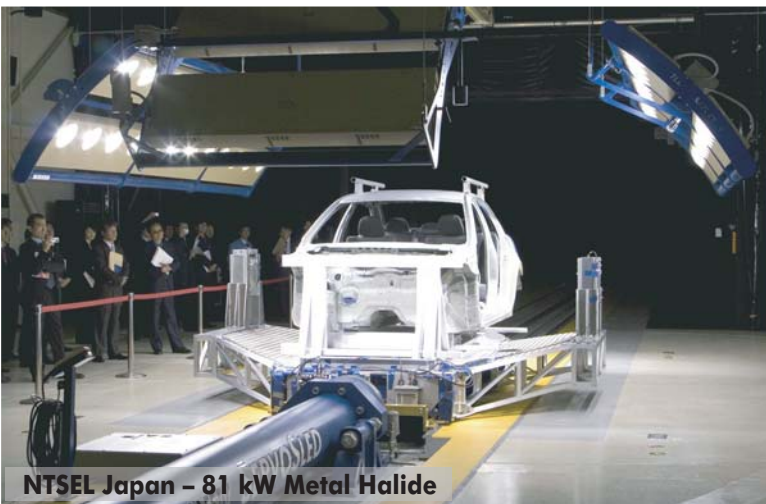


LIGHTING SYSTEMS FOR SAFETY & COMPONENT TESTING



GM Milford Proving Grounds Rollover Lighting System – 1728 kW Tungsten



NTSEL Japan – 81 kW Metal Halide



GM Brasil – 81 kW Metal Halide

Metal-Halide and Tungsten-Halogen Systems
Adjustable-height & fixed systems for overhead banks, floor stands & film pits
Powered elevation and tilt controlled by wireless remote tablet PC

822 Third Avenue South
Kent, WA 98032 USA
www.seattlesafety.com



Tel: 253-395-4321
Fax: 253-981-0223
E-mail: info@seattlesafety.com